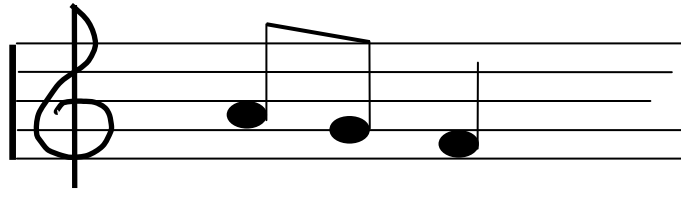


Tracy Mallon - Vocal Music
1(262) 275-1022 x232
Email: tmallon@fontana.k12.wi.us



Rusty Wulff - Instrumental Music
1(262) 275-1022 x231
Email: rwulff@fontana.k12.wi.us

Fontana School Music

Performance Calendar 2011 - 2012

All Concerts held at school will begin at 7:00 P.M. unless otherwise noted.
(5th Band will perform as soon as possible)

Friday, September 30 (½ Day of school)	Homecoming Parade 2 PM <i>Students report to Kenosha/Wood St. in Walworth @ 1:45</i> <i>White shoes/socks, black pants, uniform top.</i>	6-8 Band @ Walworth
Monday, October 17th	Fall Concert	6-8 Band/5-8 Chorus
Thursday, December 8th	Holiday Program	Grades 4K-2
Thursday, December 15th	Holiday Program	5-8 Band/Chorus
Saturday, March 17 th	Solo/Ensemble Festival	Select 6-8 Band/Chorus
Thursday, April 12th	Music Program	Grades 3-4
*TBD	BFAS Choral Clinic Big Foot H.S. in AM	7/8 Chorus
*TBD	BFAS Band Clinic Big Foot H.S. in AM	MS Band Students
Tuesday, May 8th	Spring Band Concert	5-8 Band Students
Thursday, May 17th	Spring Choral Concert	5-8 Chorus Students
Monday, May 28th	Memorial Day Parade 11AM	6-8 Band Students

EVERYONE IN OUR BAND AND CHORUS IS IMPORTANT!

Attendance at performances is required. Excessive unexcused absences will result in the student being removed from the performance group.

Please contact your teacher in advance whenever possible if your child is going to miss a performance for illness, etc. (Phone & Email addresses at top of page.)

FONTANA MUSIC
WEEKLY REHEARSAL/LESSON SCHEDULE
FOR 5-8 BAND/CHORUS

Post at home

6th Grade Band:	Rehearse Days 2,4,6 Lesson days/times assigned
5/6th Grade Chorus	Rehearse Days 1,3,5
7/8 Band:	Rehearse Days 1,3,5 Lesson days/times assigned
7/8 Chorus:	Rehearse 2,4,6

Please complete, clip, and return this lower portion to your music teacher as soon as possible. Email will be used by the music teachers for special correspondence with parents and students as well as reminders for upcoming events.

“We have received and reviewed the following with our child(ren). We understand our child(ren)’s obligation for public performances. We even posted this on our fridge!”

- ✓ *Extra help for music students is available after school by appointment.*
- ✓ *Unexcused absences from band lessons will be followed up by a note sent home.*
- ✓ *Band instruments may not be left at school over weekends.*

_____ PRINT Parent email address is: (if checked routinely)

_____ PRINT Student email address

Student PRINT

Date

Parent Signature

